

NOT TO SCALE

LEGAL DESCRIPTION

LOT 15 OF THE PLAT OF THE ELLIPSE, ACCORDING TO THE PLAT THEREOF, AS RECORDED IN PLAT BOOK 11 AT PAGE 84 OF THE PUBLIC RECORDS OF MARTIN COUNTY, FLORIDA.

SAID PARCEL CONTAINS 2.07 ACRES MORE OR LESS.

TITLE CERTIFICATION

- ARTHUR W. TRUFELLI, A MEMBER OF THE FLORIDA BAR, HEREBY CERTIFY THAT AS OF August 19, 2003, AT 1:00 P.M.:
- RECORD TITLE TO THE LAND DESCRIBED AND SHOWN ON THIS PLAT IS IN THE NAME OF THE PERSON, PERSONS, CORPORATION OR OTHER ENTITY WHICH EXECUTED THE CERTIFICATE OF OWNERSHIP AND DEDICATION HEREON.
- THE ONLY MORTGAGE NOT SATISFIED OR RELEASED OF RECORD ENCUMBERING THE LAND DESCRIBED HEREON IS AS FOLLOWS: NONE
- ALL TAXES THAT ARE DUE AND PAYABLE PURSUANT TO SECTION 197.192 F.S. HAVE BEEN PAID.

DATED THIS 19th DAY OF August, 2003

ARTHUR W. TRUFELLI, ESQ.
ATTORNEY AT LAW, FLORIDA BAR NO. 27091
5453 CENTER STREET
JUPITER, FLORIDA 33458

CERTIFICATE OF OWNERSHIP AND DEDICATION

NEW HAMPTON CORPORATION, A FLORIDA LIMITED LIABILITY COMPANY, BY AND THROUGH ITS UNDERSIGNED OFFICER, HEREBY CERTIFIES THAT IT IS THE OWNER OF THE PROPERTY DESCRIBED ON THIS PLAT OF "ELLIPSE - REPLAT OF LOT 15" AND HEREBY DEDICATES AS FOLLOWS:

- UTILITY EASEMENTS:
THE UTILITY EASEMENTS SHOWN ON THIS PLAT OF "ELLIPSE - REPLAT OF LOT 15" MAY BE USED FOR UTILITY PURPOSES (INCLUDING CATV) BY ANY UTILITY IN COMPLIANCE WITH SUCH ORDINANCES AND REGULATIONS AS MAY BE ADOPTED FROM TIME TO TIME BY THE BOARD OF COUNTY COMMISSIONERS OF MARTIN COUNTY, FLORIDA. MARTIN COUNTY HAS REGULATORY AUTHORITY OVER, BUT SHALL BEAR NO RESPONSIBILITY, DUTY, OR LIABILITY FOR, ANY UTILITY EASEMENTS DESIGNATED AS SUCH ON THIS PLAT.

NEW HAMPTON CORPORATION, A FLORIDA LIMITED LIABILITY COMPANY ACCEPTS AND ACKNOWLEDGES THE EXISTING EASEMENTS AS ILLUSTRATED ON PLAT BOOK 11, PAGE 84 OF THE PUBLIC RECORDS OF MARTIN COUNTY, FLORIDA.

DATED THIS 19th DAY OF August, 2003.
NEW HAMPTON CORPORATION, A FLORIDA LIMITED LIABILITY COMPANY

BY: Shaniquella
Yes
PRESIDENT
NEW HAMPTON CORPORATION, A FLORIDA LIMITED LIABILITY COMPANY

WITNESS: Dupine Lecher
NAME
WITNESS: [Signature]
NAME

ACKNOWLEDGMENT
STATE OF FLORIDA
COUNTY OF MARTIN

THE FOREGOING CERTIFICATE OF OWNERSHIP AND DEDICATION WAS ACKNOWLEDGED BEFORE ME THIS 19th DAY OF AUGUST, 2003 BY Shaniquella PRESIDENT OF NEW HAMPTON CORPORATION, A FLORIDA LIMITED LIABILITY COMPANY, AS THE PRESIDENT OF NEW HAMPTON CORPORATION, A FLORIDA LIMITED LIABILITY COMPANY, WHO IS PERSONALLY KNOWN TO ME OR HAS PRODUCED A _____ AS IDENTIFICATION.

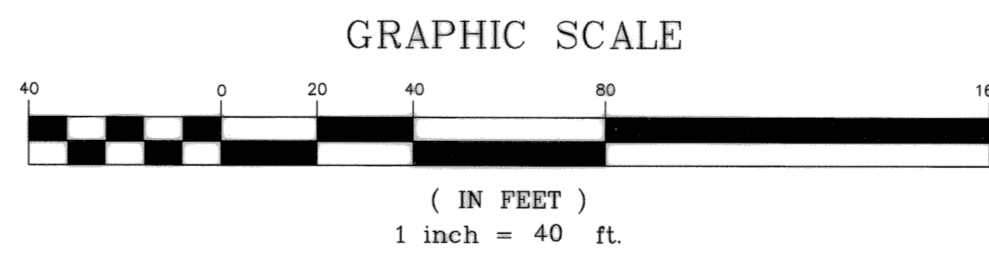
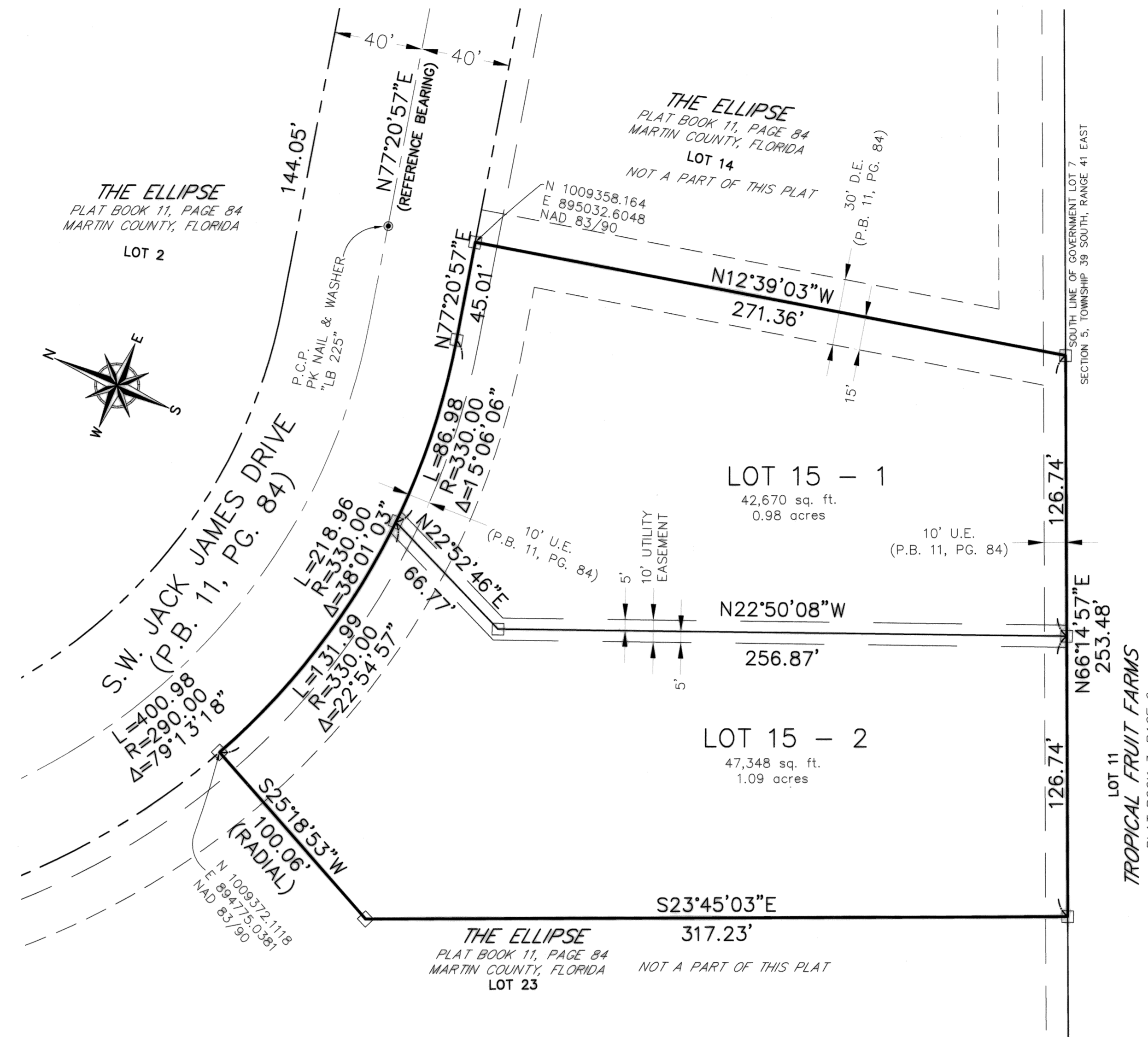
WITNESS MY HAND AND OFFICIAL STAMP, THIS 19th DAY OF AUGUST, 2003.



Lucy-Ann Kellar
NOTARY PUBLIC
PRINTED NAME: Lucy-Ann Kellar
MY COMMISSION EXPIRES: 2/6/09

ELLIPSE REPLAT OF LOT 15

BEING A REPLAT OF LOT 15 OF THE PLAT OF "THE ELLIPSE", AS RECORDED IN PLAT BOOK 11 AT PAGE 84 OF THE PUBLIC RECORDS OF MARTIN COUNTY, FLORIDA, LYING IN SECTION 5, TOWNSHIP 39 SOUTH, RANGE 41 EAST MARTIN COUNTY, FLORIDA.



MARTIN CO., FLA.
OCT 29 AM 8:20
MARSHA EWING
CLERK OF CIRCUIT COURT
BY _____ D.C.

CLERK'S RECORDING CERTIFICATE

I, MARSHA EWING, CLERK OF THE CIRCUIT COURT OF MARTIN COUNTY, FLORIDA, HEREBY CERTIFY THAT THIS PLAT WAS FILED FOR RECORD IN PLAT BOOK 15 PAGE 14 MARTIN COUNTY, FLORIDA PUBLIC RECORDS THIS 29th DAY OF October, 2003

MARSHA EWING, CLERK OF THE CIRCUIT COURT, MARTIN COUNTY, FLORIDA.
FILE NUMBER 1704093
BY Sandra Pierce DC
DEPUTY CLERK

5-39-41-002-000-0000.0
PARCEL CONTROL NO.

LEGEND

- NAD NORTH AMERICAN DATUM
- P.B. PLAT BOOK
- PG. PAGE
- PK PARKER KALON NAIL
- R RADIUS
- L LENGTH
- Δ DELTA
- D.E. DRAINAGE EASEMENT
- U.E. UTILITY EASEMENT
- PCP INDICATES PERMANENT CONTROL POINT
- INDICATES SET PERMANENT 4X4 CONCRETE MONUMENT WITH ALUMINUM DISC "BETSY LINDSAY INC PRM LB 6852" (PRM)
- INDICATES SET #5 IRON ROD & CAP "BL LB 6852" (IRC)

MARTIN COUNTY APPROVAL

THIS PLAT IS HEREBY APPROVED BY THE UNDERSIGNED ON THE DATE OR DATES INDICATED.

- 10-9-03 DATE [Signature] COUNTY SURVEYOR AND MAPPER
- 10-10-03 DATE [Signature] COUNTY ENGINEER
- 10/23/03 DATE [Signature] COUNTY ATTORNEY
- 10/23/03 DATE [Signature] CHAIRMAN BOARD OF COUNTY COMMISSIONERS MARTIN COUNTY, FLORIDA

BCC: 7-22-03

ATTEST: [Signature]
CLERK
By Sandra Pierce DC

GENERAL NOTES

- BEARINGS AS SHOWN HEREON ARE BASED ON STATE PLANE COORDINATES, NAD 88/90 INFORMATION, BEARING OF N77°20'57"E ALONG THE CENTER LINE OF S.W. JACK JAMES DRIVE, MARTIN COUNTY, FLORIDA.
- THIS PLAT, AS RECORDED IN ITS GRAPHIC FORM IN THE PUBLIC RECORDS, IS THE OFFICIAL DEPICTION OF THE SUBDIVIDED LANDS DESCRIBED HEREON AND WILL IN NO CIRCUMSTANCES BE SUPPLANTED IN AUTHORITY BY ANY OTHER FORM OF THE PLAT, WHETHER GRAPHIC OR DIGITAL.
- NOTICE: THERE MAY BE ADDITIONAL RESTRICTIONS THAT ARE NOT RECORDED ON THIS PLAT THAT MAY BE FOUND IN THE PUBLIC RECORDS OF THIS COUNTY.

CERTIFICATE OF SURVEYOR AND MAPPER

I, ELIZABETH A. LINDSAY, HEREBY CERTIFY THAT THIS PLAT OF "ELLIPSE - REPLAT OF LOT 15" AS SHOWN HEREON IS A TRUE AND CORRECT REPRESENTATION OF A SURVEY MADE UNDER MY RESPONSIBLE CHARGE AND SUPERVISION; AND THAT SAID SURVEY IS ACCURATE TO THE BEST OF MY KNOWLEDGE AND BELIEF; THAT P.R.M.'S (PERMANENT REFERENCE MONUMENTS) HAVE BEEN PLACED AS REQUIRED BY LAW; AND THAT LOT CORNERS WILL BE SET FOR THE REQUIRED IMPROVEMENTS, AND THAT THE SURVEY DATA COMPLIES WITH ALL OF THE REQUIREMENTS OF CHAPTER 177, PART 1, FLORIDA STATUTES AS AMENDED, AND ORDINANCES OF MARTIN COUNTY, FLORIDA.

BY: [Signature] DATE: August 21, 2003
ELIZABETH A. LINDSAY
PROFESSIONAL SURVEYOR AND MAPPER
FLORIDA REGISTRATION NO. 4724
LICENSED BUSINESS NO. 6852

B Betsy Lindsay, Inc.
SURVEYING AND MAPPING
208 NORTH U.S. HWY NO. 1 - UNIT 8 - TEQUESTA, FLORIDA 33469
(561)575-5275 (561)575-4324 FAX

ELLIPSE
REPLAT OF LOT 15
SHEET 1 OF 1